



Centre Drive, Epping, CM16

BUTLER & STAG



This well-presented three-bedroom family home is situated in a prime location, just a few minutes' walk from Epping's central line station and within easy reach of Epping High Street.



Freehold

- Semi Detached Family Home
- Three Bedrooms
- Walking Distance To High Street & Epping Central Line Station
- Two Receptions
- Workshop/Off Street Parking
- West Facing Rear Garden

The property is also conveniently located near Ivy Chimneys Primary School, making it an excellent choice for families.

The accommodation is arranged over two floors. On the ground floor, there is a spacious lounge that provides a comfortable living area, along with a modern fully fitted kitchen that opens into a dining room, perfect for family meals or entertaining. The property also benefits from a separate utility room, a downstairs cloakroom, and additional storage space, adding practicality to the stylish interior.

Upstairs, the home offers two generously sized double bedrooms, a good-sized single bedroom, and a modern family bathroom, all designed to provide comfort and functionality.

Externally, the property features a well-maintained garden, ideal for outdoor relaxation or entertaining. To the front, there is off-street parking for two vehicles, adding to the convenience of this fantastic home.

This property offers a superb combination of location, style, and practicality, making it an excellent choice for families or commuters.

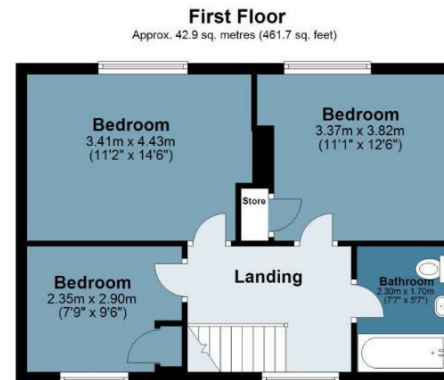
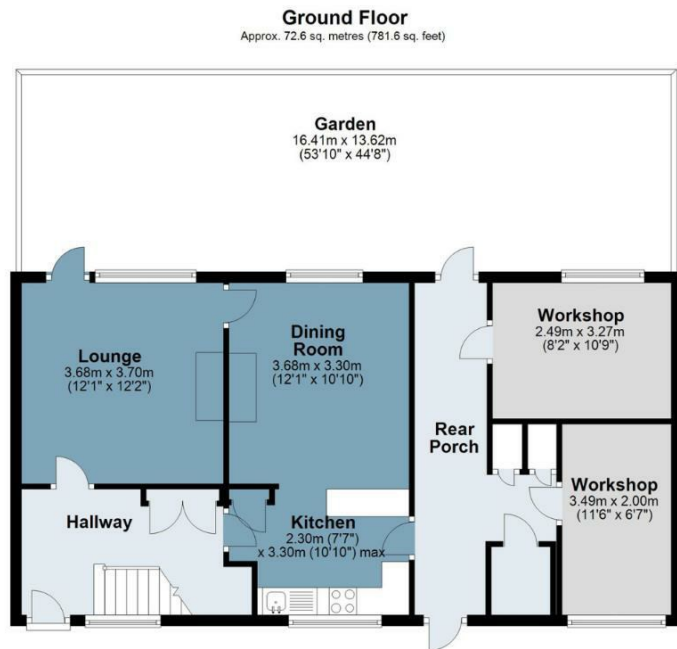




Centre Drive

Approx. Gross Internal Area 115.5 sq. metres (1243.4 sq. feet)

BUTLER & STAG



Measurements are approximate and for illustration purposes only. While we do not doubt the accuracy and completeness, we advise you conduct a careful independent assessment of the property to determine monetary value
© @modephoto.uk www.modephoto.co.uk

BUTLER & STAG

☎ 01992 667666

🏠 4 Forest Drive, Theydon Bois, Essex, CM16 7EY

✉ theydon@butlerandstag.com

IMPORTANT NOTICE - These particulars have been prepared in good faith and they are not intended to constitute part of an offer or contract. We have not performed a structural survey on this property and the services, appliances and specific fittings have not been tested. All photographs, measurements, floor plans and distances referred to are given as a guide and should not be relied upon.

www.butlerandstag.uk